



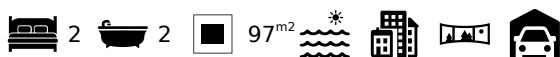
REDUCED



## Traditional 2 Bedroom Beachfront Apartment, Praia da Rocha, Portimão

APARTMENT IN PORTIMÃO

ref. **LG2187**  
~~649.000€~~  
**6.628.548€**



### Location +

Town	Portimão
Parish	Portimão
Municipality	Portimão, Faro
Region	Algarve (West)

### Details +

Usage	Residential
Type	Apartment
Construction Year	1999
Rooms	4
Bedrooms	2
Bathrooms	2
Floors	1

- 2 Bedrooms, 2 Bathrooms
- Living Area 96.5m²
- Shared roof terrace
- Year of Construction 1999
- Private underground parking
- Distance from beach 120m

This second floor, 2-bedroom apartment with balconies and a shared roof terrace features spectacular views of Praia da Rocha beach and ocean. The property has private underground parking and an elevator. Just seconds away from all amenities it is the perfect holiday or investment apartment.

The property consists of:

- Entrance hall
- Living/dining room
- Fully fitted kitchen with laundry area
- Master bedroom en-suite bathroom
- Guest bedroom and guest bathroom

External:

- Communal roof terrace with personal storage areas
- Allocated underground parking space with automatic door



YOUR PROPERTY SPECIALISTS

#### Areas +

Living Area 97 m<sup>2</sup>  
Usable area 126 m<sup>2</sup>

#### Access +

Tarmac

#### Parking +

Garage, Underground Garage,  
Autom. Garage Door

#### Living Room +

Lounge/Dining

#### Terrace +

Balcony/Terrace, Communal Roof  
Terrace

#### Kitchen +

Fully Fitted, Fully Equipped

#### Other Rooms +

Utility Room, Storage

#### Bedroom +

Fitted Wardrobe

#### Bathroom +

1 Family Bathroom, 1 En-Suite

#### Equipment +

Cable/Satellite TV, Intercom

#### Water-Electricity-Drainage +

All mains

#### Windows +

Double glazing, Manual  
Shutters/Blinds

#### Exterior +

Communal Roof Terrace

#### Views +

Panoramic View, Town View, Sea  
View

#### Amenities

- Intercom entrance
- Fitted wardrobes
- All mains' utilities
- Double glazing with shutters
- Elevator

#### Location

- 120m from beach and ocean
- 350m to marina
- 4.0 to Alto Golf course
- 1.2km to nearest school
- 73km to Faro airport



Lagos Office - ALGARVE:  
Marina de Lagos, Edifício Astrolábio, Lote 24-Loja 5  
GPS. 37° 6' 41.85" N - 8° 40' 30.251" W

Togofor Homes - Sociedade Mediação Imobiliária, LDA | License: AMI 6902

+351 282 476 568  
enquiries@togofor-homes.com  
[www.togofor-homes.com](http://www.togofor-homes.com)



YOUR PROPERTY SPECIALISTS



## PHOTO GALLERY



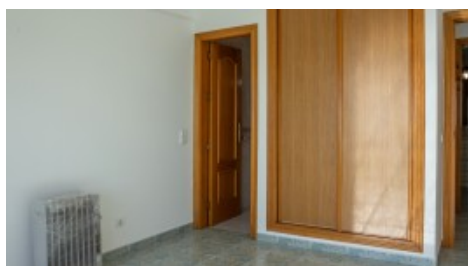
*Dining Area*



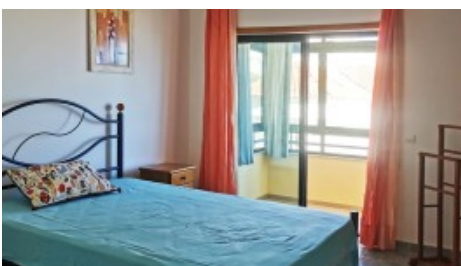
*Terrace*



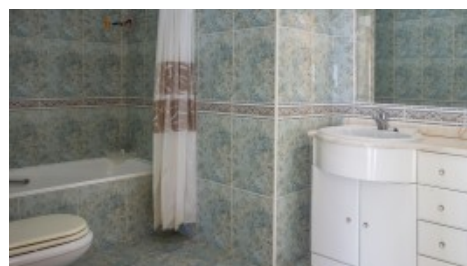
*Kitchen*



*Master Bedroom*



*Guest Bedroom*



*Guest Bathroom*



*View*



*View*



*Roof Terrace*



*View Praia da Rocha*



Lagos Office - ALGARVE:  
Marina de Lagos, Edifício Astrolábio, Lote 24-Loja 5  
GPS. 37° 6' 41.85" N - 8° 40' 30.251" W

Togofor Homes - Sociedade Mediação Imobiliária, LDA | License: AMI 6902

+351 282 476 568  
enquiries@togofor-homes.com  
**www.togofor-homes.com**